

A vibrant splash of multi-colored powder (blue, purple, red, orange, yellow) is visible on the left side of the page, extending from the top to the bottom.

omni**CHROMA**<sup>®</sup>

# Lookbook 2

*A guide of case images demonstrating  
the shade-matching capabilities  
of OMNICHROMA.*

## Table of Contents

Procedure Guide \_\_\_\_\_ 4-13

### **ANTERIOR**

Class III \_\_\_\_\_ 14-17

Class IV \_\_\_\_\_ 18-23

Class V \_\_\_\_\_ 24-27

Veneer \_\_\_\_\_ 28-29

Diastema Closure \_\_\_\_\_ 30-33

Incisal Edge \_\_\_\_\_ 34-35

### **POSTERIOR**

Class I \_\_\_\_\_ 36-39

Class II \_\_\_\_\_ 40-43

Longevity \_\_\_\_\_ 44-47

The culmination of 35+ years of research and development, Tokuyama Dental is proud to present OMNICHROMA, the world's first dental composite that matches every tooth with a single composite shade.

## Most Clinical Cases

OMNICHROMA uses a standard universal procedure. The paste is opaque-white before curing, allowing for higher visibility and easier placement. After curing, it becomes natural in appearance and matches the color of the surrounding tooth.

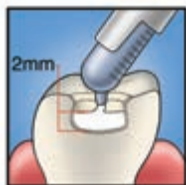
### POSTERIOR



Preparation: Add chamfers to help eliminate margin visibility and aid shade matching.



Apply bonding agent according to manufacturer's instructions.



Fill with OMNICHROMA.

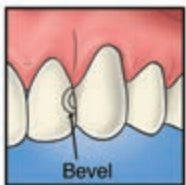


Light cure. (Curing time varies depending on intensity of curing light.)



Finish and polish.

### ANTERIOR



Preparation: Add bevels to help eliminate margin visibility and aid shade matching.



Bond and then fill with OMNICHROMA.



Light cure. (Curing time varies depending on intensity of curing light.)



Finish and polish.



Full procedure with tips on pages 6-7



Before



During Procedure



After

Class V case image courtesy of Dr. James Chae, Diamond Bar, CA



1 Pre-operative photo of abfraction on tooth #6. Patient complaint was cold sensitivity at the root of the tooth.



2 A retraction cord impregnated with epinephrine was inserted into the gum, and a wide bevel was placed on the tooth. I always recommend a nice bevel because it allows for a more seamless and natural looking blend.



3 Etching with 37% phosphoric acid.



4 Rinsed and dried before placing Tokuyama Universal Bond. No light cure was needed as this bonding agent self cures.



5 OMNICHROMA was placed. The opaque white color allows for visibility while placing. (before light curing)



6 OMNICHROMA composite after light curing.



7 Post-op photo after finishing and polishing with Sof-Lex disc and finishing diamond bur.



## Cases with Limited Tooth Structure

In large Class III and IV cases, OMNICHROMA may experience shade-matching interference due to a lack of surrounding dentition. OMNICHROMA BLOCKER is a supplementary material to be used in conjunction with OMNICHROMA as a lingual layer to prevent shade-matching interference in these cases. OMNICHROMA BLOCKER can also be used to mask staining, or to reconstruct a highly opaque tooth.



**Bevel**  
Preparation and bonding: Add bevels to help eliminate margin visibility and aid shade matching.



**BLOCKER**  
Apply BLOCKER as a lingual layer. Thickness of the lingual layer can vary, but 0.5mm is illustrated as a guide. Light cure.



**BLOCKER**  
**omnichroma**  
Apply OMNICHROMA as a secondary layer.



**omnichroma**  
Note that OMNICHROMA is opaque white before curing. It blends naturally after curing.



Light cure, finish, and polish. (Curing time varies depending on intensity of curing light.)

Read all instructions, information, precautions, and notes in IFU before use.



*Before*



*During Procedure*



*After*

Full procedure with tips on pages **10-13**

Class IV case image courtesy of Dr. Robert Lowe, Charlotte, NC



**1** A facial preoperative view of tooth #7. The patient had an aesthetic concern that #7 was shorter incisally than the lateral incisor #10 on the contralateral side.

**2** Taking a conventional Vita shade is shown for reference only. One of the unique advantages of OMNICHROMA is that this step is eliminated.

**3** The preparation of the facial surface of tooth #7 includes a generous bevel in enamel from the incisal edge to around the middle one-third of the facial surface. For this particular case, there is no need to involve the interproximal contact areas. Placing the vertical finish lines at the facial proximal line angles and making the horizontal finish line curved rather than straight, will help the restorative material blend and disappear with the natural tooth surface.



**4** Tokuyama Universal Bond is shown. This is a two-bottle system that can be used with total etch, self-etch, and selective etch protocols. Another unique feature is that it is self-curing. No light curing is necessary prior to composite placement.



**5** Tokuyama Universal bond is placed according to manufacturers' instructions. Another unique feature of this adhesive is that it does not require "scrubbing into the etched surface" or "agitating" the microapplicator to ensure proper coverage of the etched surface.



**6** OMNICHROMA BLOCKER is applied from the lingual surface of the tooth to rebuild the missing portion of the incisal edge. Make sure not to build the Blocker too far facially or cover the bevel of the preparation.



7 Once the OMNICHROMA BLOCKER increment is light cured, an interproximal finishing strip is used to shape and polish the proximal area.



8 The placement of OMNICHROMA is done with a composite placement instrument covering the remaining facial surface of the preparation. Use the facial position of the adjacent teeth as a guide"



9 A composite finishing carbide is used to contour and shape the facial surface of the restorative material.



10 An abrasive disk is used to further refine the anatomic contours of the restorative material using Violet (medium), Green (fine), then Red (super-fine). Make sure the discs are rotating from the composite towards the tooth to avoid ditching. Electric handpieces are nice because it is easy to control the rotation and the RPM of the bur which should not exceed 6000 RPM. Use of water spray is recommended when using abrasive polishing discs.



11 Rubber composite polishers are used to create the final polished surface. First, the purple prepolisher is used, then the final luster is achieved using the salmon-colored high luster instrument.



12 Facial photos of the final OMNICHROMA restoration on tooth # 7. Note how well the OMNICHROMA restoration blends with the surrounding tooth color, especially when compared to some of the previous composite restorations that are seen on other teeth.





“OMNICHROMA (Tokuyama Dental) has been a game changer for my dental practice with composite restorations. For almost all of my anterior restorations, I simply ask for OMNICHROMA and I know that the color will match and I will have a nice, strong, and easy to polish restoration that will last. OMNICHROMA takes the shade matching decision away from me and I don't have to stock a lot of different composite material.”

**-Dr. James H. Peyton**



*Prior to restoration.*



*Post-operative image restored with OMNICHROMA.*

Case image courtesy of  
Dr. James H. Peyton, Bakersfield, CA





*Prior to restoration.*



*Post-operative image restored with OMNICHROMA.*

Case image courtesy of  
Dr. Peter Auster, Pomona, NY



*Prior to restoration.*



*Post-operative image restored with OMNICHROMA.*

Case image courtesy of  
Dr. Robert S. Rosenfeld, Westwood, NJ



“As a Cosmetic and Health Centered Dentist, I have always offered a variety of composite restorations to my patients including composite veneers. Until using OMNICHROMA, these procedures could be very time intensive. Since using OMNICHROMA, I have cut my time in half. I love the polish and sheen of the final restoration more than any other composite I've ever used!”

**-Dr. Stephanie Vondrak**



*Prior to restoration.*



*Post-operative image restored with OMNICHROMA and OMNICHROMA BLOCKER.*

Case image courtesy of  
Dr. Stephanie Vondrak, Elkhorn, NE



*Prior to restoration.*



*Post-operative image restored with OMNICHROMA.*

Case image courtesy of  
Dr. Ross W. Nash, Huntersville, NC

Full procedure with  
tips on pages **10-13**



*Prior to restoration.*



*Post-operative image restored with OMNICHROMA and OMNICHROMA BLOCKER.*

Case image courtesy of  
Dr. Robert Lowe, Charlotte, NC



*Prior to restoration.*



*Post-operative image restored with OMNICHROMA.*

Case image courtesy of  
Dr. Kevin Brown, Bellevue, WA



*Prior to restoration.*



*Post-operative image restored with OMNICHROMA and OMNICHROMA BLOCKER.*

Case image courtesy of  
Dr. James Chae, Diamond Bar, CA





“ I have literally used OMNICHROMA composite resin for all classes of direct restorations. OMNICHROMA has proven its ability to match shades from light to dark. A significant percentage of my patient population are seniors, with teeth darker than the standard “A2”. OMNICHROMA has eliminated the shade-matching step, and has eliminated the need to blend shades to try to duplicate Mother Nature.”

**-Dr. Robert S. Rosenfeld**



*Prior to restoration.*



*Post-operative image restored with OMNICHROMA.*

Case image courtesy of  
Dr. Robert S. Rosenfeld, Westwood, NJ



*Prior to restoration.*



*Post-operative image restored with OMNICHROMA.*

Case image courtesy of  
Dr. James Chae, Diamond Bar, CA



*Prior to restoration.*



*Post-operative image restored with OMNICHROMA.*

Case image courtesy of  
Dr. James Chae, Diamond Bar, CA



“Any Restorative dentist would be thrilled to have in their armamentarium of materials a simplified composite resin system that allows them to use one composite to match the shade of all the teeth they work on. There are so many advantages and benefits with OMNICHROMA but the most significant to the dentist is the simplification and minimization of inventory which equates to a decreased overhead. In today’s reality of insurance driven dentistry, cost savings is at the forefront of every dental practice, and OMNICHROMA is a unique way to do just that while at the same time improving quality.”

**-Dr. Kevin Brown**



*Prior to restoration.*



*Post-operative image restored with OMNICHROMA.*

Case image courtesy of  
Dr. Kevin Brown, Bellevue, WA



## Tips and Tricks

How to Achieve Polychromatic Results with a One-Shade Composite  
*by Dr. Kevin Brown*

The best techniques I have found when using BLOCKER with OMNICHROMA:

- 1. BLOCKER as the lingual shelf:** Using a silicone putty index as an incisal guide, BLOCKER can be used as the lingual shelf (0.5mm or less) with OMNICHROMA as the top layer.
- 2. BLOCKER as dentin shade:** Use OMNICHROMA as a thin lingual shelf (~0.25mm), then BLOCKER can act as an artificial dentin and sculpted to create mamelons. Then, if desired, Estelite Color (Tokuyama Dental) resins can be used to enhance internal characterization(s) such as white calcifications, craze lines, translucencies, etc. Finish with a final layer of OMNICHROMA on top.



*Prior to restoration.*



*Post-operative image restored  
with OMNICHROMA and  
OMNICHROMA BLOCKER.*

Case image courtesy of  
Dr. Kevin Brown, Bellevue, WA





*Prior to restoration.*



*Post-operative image restored  
with OMNICHROMA.*

Case image courtesy of  
Dr. Kevin Brown, Bellevue, WA



*Prior to restoration.*



*Post-operative image restored  
with OMNICHROMA.*

Case image courtesy of  
Dr. James Chae, Diamond Bar, CA



“Since I have had OMNICHROMA in my practice, color matching and repairs have been a breeze! I don’t know how I practiced without it. Thank you, Tokuyama Dental.”

**-Dr. Ross W. Nash**



*Prior to restoration.*



*Post-operative image restored with OMNICHROMA.*

Case image courtesy of  
Dr. Ross W. Nash, Huntersville, NC



“NO touch-ups were needed at follow-up appointments, OMNICHROMA looked great.”

**-Dr. Carla Cohn**



*Prior to restoration.*



*Post-operative image restored with OMNICHROMA.*

Case image courtesy of  
Dr. Carla Cohn, Winnipeg, MB



*Prior to restoration.*



*Post-operative image restored with OMNICHROMA.*

Case image courtesy of  
Dr. Peter Auster, Pomona, NY



*Prior to restoration.*



*Post-operative image restored with OMNICHROMA.*

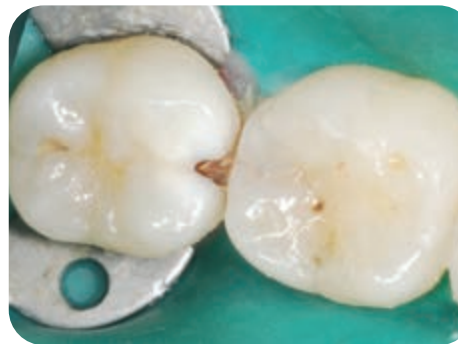
Case image courtesy of  
Dr. James Chae, Diamond Bar, CA





“OMNICHROMA is a game changer for the restorative dentist! Imagine the benefit of using only one shade of composite for all of your resin restorations.”

**-Dr. Mike Malone**



*Prior to restoration.*



*Post-operative image restored with OMNICHROMA.*

Case image courtesy of  
Dr. Mike Malone, Lafayette, LA

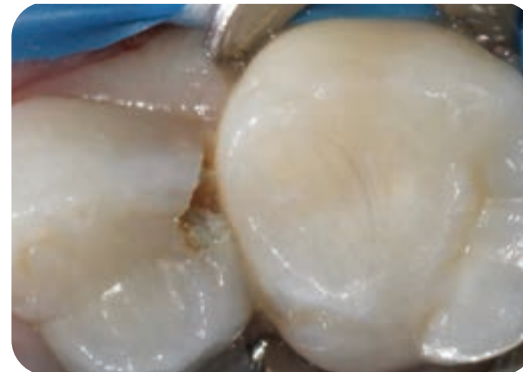


*Prior to restoration.*



*Post-operative image restored with OMNICHROMA.*

Case image courtesy of  
Dr. James Chae, Diamond Bar, CA



*Prior to restoration.*



*Post-operative image restored with OMNICHROMA.*

Case image courtesy of  
Dr. Carla Cohn, Winnipeg, MB



“I do a lot of post orthodontic smile enhancement with non-invasive direct composite bonding. My patients and their orthodontists are ecstatic about OMNICHROMA and it’s ability to match tooth color, not just at the time of placement, but year after year. The anterior composite work I do for my patients will now last much longer, not only functionally but also esthetically.”

**-Dr. Kevin Brown**



*Prior to restoration.*



*Post-operative*



*1 Year Revisit*

Case image courtesy of  
Dr. Kevin Brown, Bellevue, WA



“ I was one of the first dentists in the United States to sample OMNICHROMA. I always take before and after photos of my work. During recall exams, it is amazing to see how well OMNICHROMA maintains the shade-matching ability and still looks natural, even after years of wear and tear.”

**-Dr. James Chae**



*Prior to restoration.*



*Post-operative*



*15 Month Revisit*

Case image courtesy of  
Dr. James Chae, Diamond Bar, CA

**Tokuyama would like to thank the doctors who  
have contributed clinical cases and testimonials  
to our OMNICHROMA Lookbook.**

**Like these case studies and testimonials?**

**Would you like to submit your own?**

Contact **[info@tokuyama-us.com](mailto:info@tokuyama-us.com)** for more information

or visit us at **[omnichroma.com/us/testimonials](https://omnichroma.com/us/testimonials)**

