

omniCHROMA®

Lookbook 1

*A guide of case images demonstrating
the shade-matching capabilities
of OMNICHROMA.*

Table of Contents

Procedure Guide _____ 4-5

ANTERIOR

Class III _____ 6-9

Class IV _____ 10-15

Class V _____ 16-23

POSTERIOR

Diastema Closure _____ 24-27

Class I _____ 28-29

Class II _____ 30-35

The culmination of 35 years of research and development, Tokuyama Dental is proud to present OMNICHROMA, the world's first dental composite that matches every tooth with a single composite shade.

Most Clinical Cases

OMNICHROMA uses a standard universal procedure. The paste is opaque-white before curing, allowing for higher visibility and easier placement. After curing, it becomes natural in appearance and matches the color of the surrounding tooth.

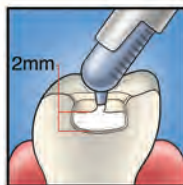
POSTERIOR



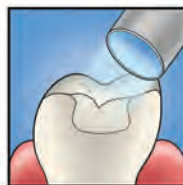
Preparation: Add chamfers to help eliminate margin visibility and aid shade matching.



Apply bonding agent according to manufacturer's instructions.



Fill with OMNICHROMA.

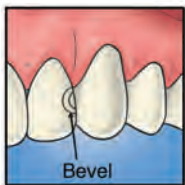


Light cure. (Curing time varies depending on intensity of curing light.)



Finish and polish.

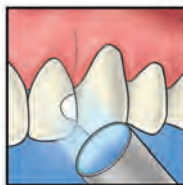
ANTERIOR



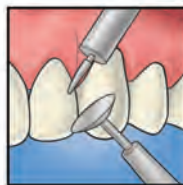
Preparation: Add bevels to help eliminate margin visibility and aid shade matching.



Bond and then fill with OMNICHROMA.



Light cure. (Curing time varies depending on intensity of curing light.)

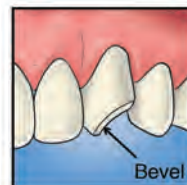


Finish and polish.

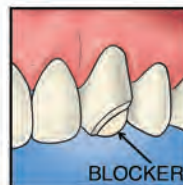


Cases with Limited Tooth Structure

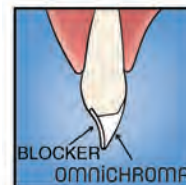
In large Class III and IV cases, OMNICHROMA may experience shade-matching interference due to a lack of surrounding dentition. OMNICHROMA BLOCKER is a supplementary material to be used in conjunction with OMNICHROMA as a lingual layer to prevent shade-matching interference in these cases. OMNICHROMA BLOCKER can also be used to mask slight staining, or to reconstruct a highly opaque tooth.



Preparation and bonding: Add bevels to help eliminate margin visibility and aid shade matching.



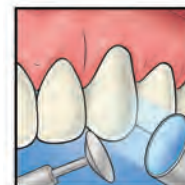
Apply BLOCKER as a lingual layer. Thickness of the lingual layer can vary, but 0.5mm is illustrated as a guide. Light cure.



Apply OMNICHROMA as a secondary layer.



Note that OMNICHROMA is opaque white before curing. It blends naturally after curing.



Light cure, finish, and polish. (Curing time varies depending on intensity of curing light.)

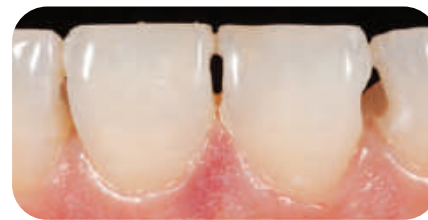
Read all instructions, information, precautions, and notes in IFU before use.





“OMNICHROMA has excellent handling properties. It is very strong, polishes well, and has the ability to blend into the shade of the tooth (dark or light). This allows for a higher quality restoration. The results on Class V restorations are amazing. I could not get a better result with 3 or 4 shades of my other composite brands.”

-Dr. James Peyton



Prior to restoration.

Post-operative image restored with OMNICHROMA.

Case image courtesy of
Dr. Kevin Brown, Bellevue, WA



Prior to restoration.



Post-operative image restored with OMNICHROMA.

Case image courtesy of
Dr. James Peyton, Bakersfield, CA



Prior to restoration.



Post-operative image restored with OMNICHROMA.

Case image courtesy of
Dr. James Peyton, Bakersfield, CA



“You will find that OMNICHROMA has all the features you need — handling, strength, polishability, and, most importantly, a totally amazing shade-matching ability that matches every tooth shade. This is my go-to composite for my simplest and most complex restorative cases. For a large Class IV, the BLOCKER is a great supplementary material, and the result speaks for itself.”

-Dr. Allan Mohr



Prior to restoration.



Post-operative image restored with OMNICHROMA and OMNICHROMA BLOCKER.

Case image courtesy of
Dr. Allan Mohr, Massapequa Park, NY



Prior to restoration.



Post-operative image restored with OMNICHROMA and OMNICHROMA BLOCKER.

Case image courtesy of
Dr. Marcos Vargas, Iowa City, IA



Prior to restoration.



Post-operative image restored with OMNICHROMA.

Case image courtesy of
Dr. James Chae, Diamond Bar, CA



Prior to restoration.



Post-operative image restored with OMNICHROMA.

Case image courtesy of
Dr. Kevin Brown, Bellevue, WA



Prior to restoration.



Post-operative image restored with OMNICHROMA and OMNICHROMA BLOCKER.

Case image courtesy of
Dr. James Chae, Diamond Bar, CA



“OMNICHROMA is
 GROUNDBREAKING— a win-win for all
 offices. No need to stock 30 composite
 shades that expire and take up space. So
 economical and it works great!”

-Dr. Peter Auster



Prior to restoration.



*Post-operative image restored
 with OMNICHROMA.*

Case image courtesy of
 Dr. Peter Auster, Pomona, NY



Prior to restoration.



Post-operative image restored with OMNICHROMA.

Case image courtesy of
Dr. Peter Auster, Pomona, NY



Prior to restoration.



Post-operative image restored with OMNICHROMA.

Case image courtesy of
Dr. James Peyton, Bakersfield, CA



Prior to restoration.



Post-operative image restored with OMNICHROMA.

Case image courtesy of
Dr. Kevin Brown, Bellevue, WA



Prior to restoration.



Post-operative image restored with OMNICHROMA.

Case image courtesy of
Dr. James Chae, Diamond Bar, CA



Prior to restoration.



Post-operative image restored with OMNICHROMA.

Case image courtesy of
Dr. James Chae, Diamond Bar, CA



Prior to restoration.



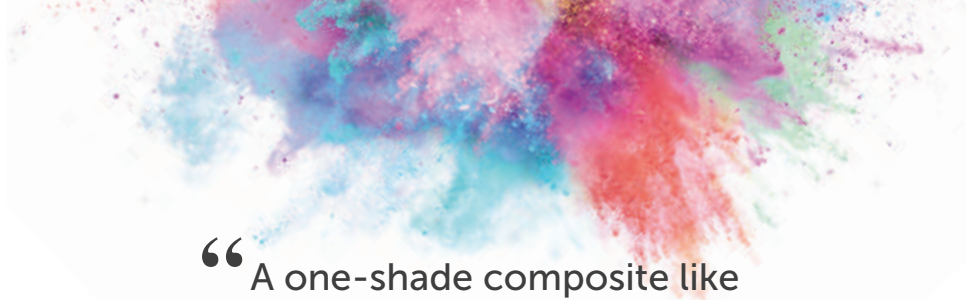
Post-operative image restored with OMNICHROMA.

Case image courtesy of
Dr. James Peyton, Bakersfield, CA



“A one-shade composite like OMNICHROMA has improved my dental practice by improving inventory management, reducing product waste, and saving chair time.”

-Dr. Ian Shuman



Prior to restoration.



Post-operative image restored with OMNICHROMA.

Case image courtesy of
Dr. Ian Shuman, Pasadena, MD



Prior to restoration.



*Post-operative image restored
with OMNICHROMA.*

Case image courtesy of
Dr. Kevin Brown, Bellevue, WA



Prior to restoration.



*Post-operative image restored
with OMNICHROMA.*

Case image courtesy of
Dr. James Chae, Diamond Bar, CA



“OMNICHROMA blends nicely to any tooth shade, even the most challenging to match shades. It polishes easily and the final restoration looks very natural.”

-Dr. James Chae



Prior to restoration.



Post-operative image restored with OMNICHROMA.

Case image courtesy of
Dr. James Chae, Diamond Bar, CA



“A single shade composite system like OMNICHROMA not only simplifies the restorative procedure by taking out the guess work in selecting a shade for fillings, but it also simplifies the ongoing expense and tracking of inventory of a standard composite. We frequently order composite shades that we use on occasion only to find that it expires before we use it all. Or on the other hand, we use a common color(s) frequently and run out of it quickly and have to keep track of ordering to keep it in stock.”

-Dr. Kevin Brown



Prior to restoration.



Post-operative image restored with OMNICHROMA and OMNICHROMA BLOCKER.

Case image courtesy of
Dr. Kevin Brown, Bellevue, WA



Prior to restoration.



Post-operative image restored with OMNICHROMA.

Case image courtesy of
Dr. Kevin Brown, Bellevue, WA



Prior to restoration.



Post-operative image restored with OMNICHROMA.

Case image courtesy of
Dr. James Chae, Diamond Bar, CA



Prior to restoration.



Post-operative image restored with OMNICHROMA.

Case image courtesy of
Dr. James Chae, Diamond Bar, CA



Prior to restoration.



Post-operative image restored with OMNICHROMA.

Case image courtesy of
Dr. James Chae, Diamond Bar, CA

**Tokuyama would like to thank the doctors who
have contributed clinical cases and testimonials
to our OMNICHROMA Lookbook.**

Like these case studies and testimonials?

Want to submit your own?

Contact **info@tokuyama-us.com** for more information

or visit us at **omnichroma.com/us/testimonials**

